

Jɔwulu baalingɔ kiri

Alphabet
en langue jɔ « samogho »

Deuxième édition
2 ème trimestre 2005
1 ère impression
orthographe révisé (2004)
200 exemplaires



orthographe préliminaire

© TOUS DROITS RESERVES

SODELJO / Société Internationale de Linguistique (SIL)

B.P. 75 Sikasso, République du Mali

B.P. 2232 Bamako, République du Mali

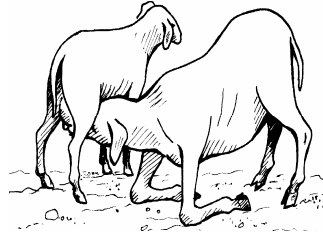
01 B.P. 1784, Ouagadougou, Burkina Faso



SODELJO / SIL

a

saa



Saa ki yo ɲɛŋ si-a.

b

baa



Baa ri yo cu ki ru.

gb

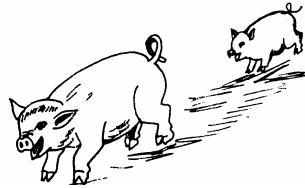
gbɛ



Ta po-i Seku gbɛ ra.

c

cɛ



Cɛ fa a daŋ yo bili-la.

d

daŋ



Daŋ ki yo ʝɔntan-a.

sh

shɛn



Kwu ki shɛn pa-i.

t

tanŋ



Tanŋ sɔɔ-ɔ kaa.

u

tuu



Tuu ki paka shɔ-i.

w

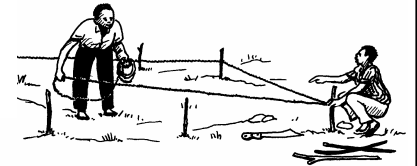
wɔ



Wɔ yo wú tɔŋ na.

y

yaa



Kí yo fu ki cɛ ki ki-a yaa ra.

ɔ

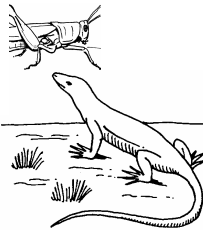
kɔli



Kɔli fa a daŋ yɔ jirɲɲ nu.

ɓ

ɓɛnikɛkɛn



ɓɛnikɛkɛn ki yɔ pyii pa-a.

kp

kpasa



Maandu yɔ jɔ shɛn-a kpasa ra.

r

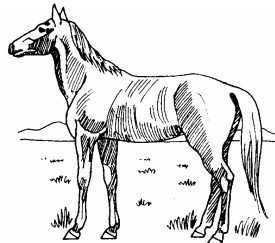
mari



Mari ka yɔ juulingɲ ni wu-a.

s

suu



Saɲɔɔ wɔ suu ki yɛ.

e

den



Tiraŋ kiri yɔ bili-la den ɛfan.

ɛ

shɛn



Shɛn sinaŋ yɔ mari ki wɔ kwa nu-a.

f

faatɔŋŋ



Daŋ ki tiŋ ki tu-i faatɔŋŋ ki ra.

g

gongon



Ka yɔ gongon sinaŋ i.

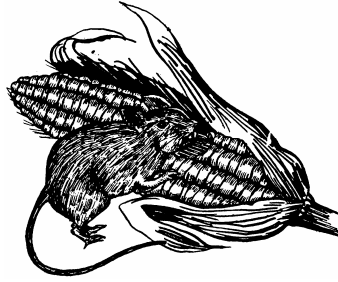
h

hali

Hali kiringɲ ki na, mari ki a ku si jɲ.

i

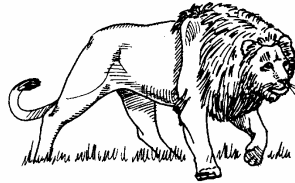
bili



Bili ki yɔ sinaŋ ki taa-ra.

j

jari



Ka yɔ jari i.

k

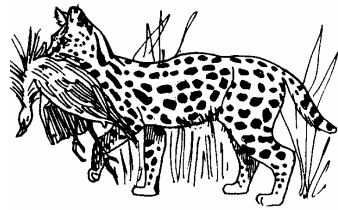
kili



Nshee wɔ kili ki yɔ kaa.

l

kpili



Kpili ki biŋ pa-i.

m

myɛɛn



Myɛɛn ki daŋ ki jin-i a maannimaŋ ki ru.

ŋm

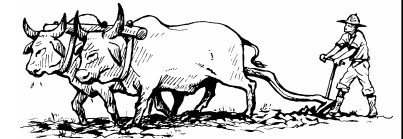
ŋmɛɛn



Shuru ki yɔ ŋmɛɛn tɛri-ra.

n

naan



Ŋulu awɔ ji ki bataa kaan-a naan ni na.

ŋ

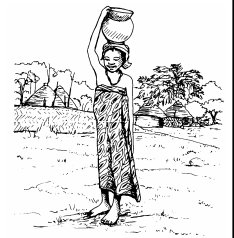
ŋɔɔŋmi



Shuru ki sɔɔ-ɔ ŋɔɔŋmi ki sun.

ŋ

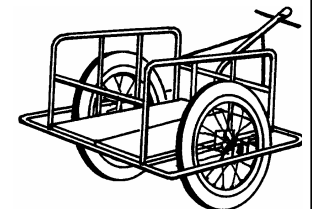
ŋuniŋ



Maannaŋ ki duŋ sɔɔ-ɔ a ŋuniŋ nu.

o

wotoro



Gbɛɛra wotoro yɔ kaa.